



Is your network ready to support the impending data and signaling surge so you can continue to offer a full suite of services to on-the-go mobile users?

T W O R K

S E A R C H

B U S I N E S S

101000110001011001100
0011101010000110001000001110

Syniverse IPX with Diameter Signaling Service

The rapid growth of the mobile industry and its continually evolving technology mean one thing above all: Companies offering mobile services must establish a future-proof network architecture to ensure efficiencies, reduce costs, maintain a high quality of service (QoS), and provide an optimal user experience.

Syniverse enables mobile service providers to achieve this by providing the largest global reach of any IPX provider through a single connection. With our IPX network, we help mobile service providers meet existing connectivity needs for current IP services while providing the foundation for a smooth transition to the future for all IP-based services, including LTE and VoLTE.

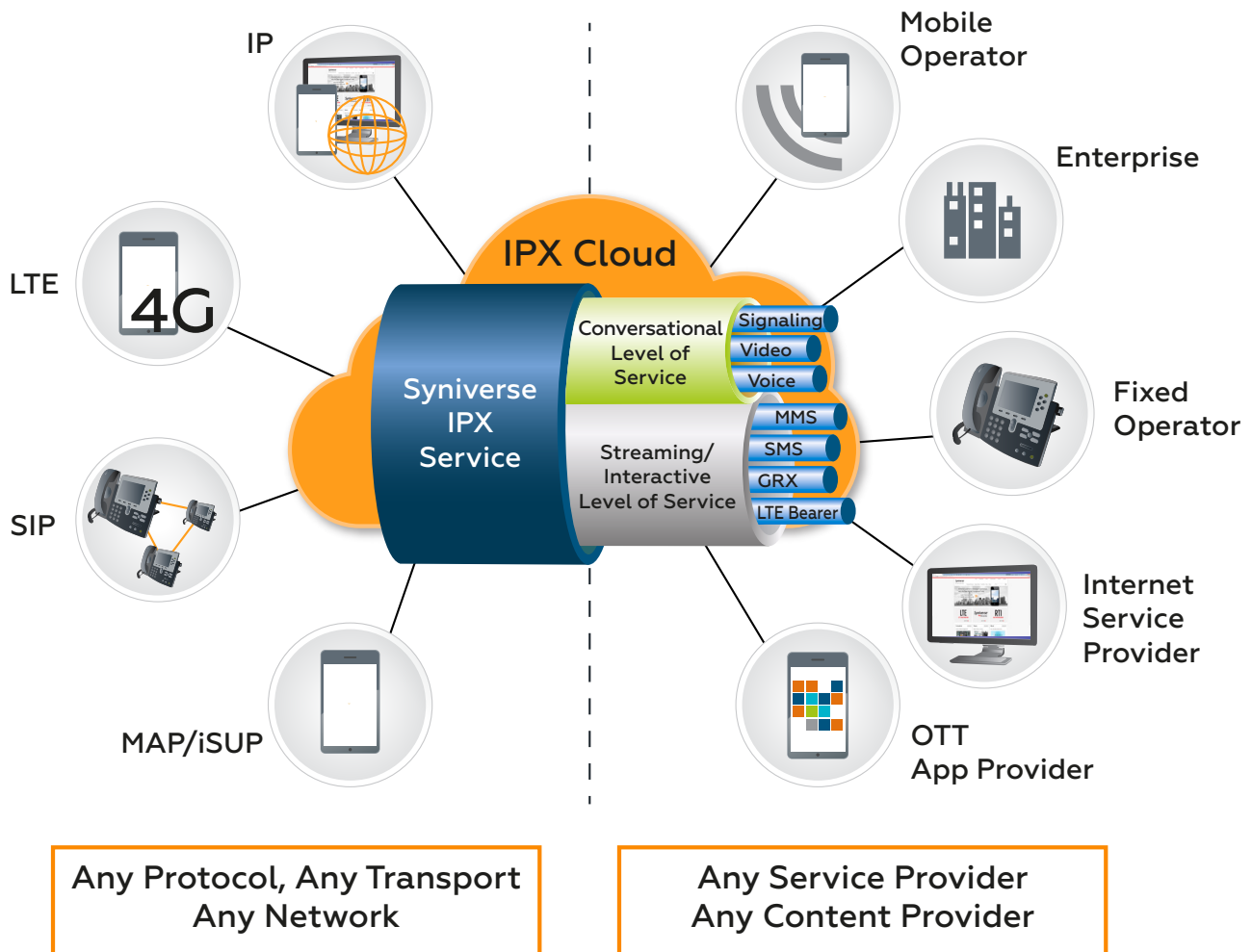
Syniverse's IPX and Diameter Signaling Service (DSS) provides access to our full suite of roaming, interconnect, messaging, network and intelligent roaming services to enable you, as a mobile operator, to efficiently and cost effectively introduce new mobile interconnect and roaming services. In addition, our DSS simplifies the configuration of your Diameter Edge Agent, manages SCTP associations, and prevents your network from being affected by Diameter signaling storms.



Uses

Syniverse's IPX allows you to offer your customers voice, data, and multimedia services on 3G and 4G/LTE networks that span an extensive connected network of global operators. This is done through a single, secure, and efficient IP-based network, with a guaranteed quality of service, end-to-end class of service and support for powerful monitoring, intelligence, and policy control.

The private Syniverse IPX network and DSS solutions provide the foundation necessary to support legacy and future network interconnections and technologies, including LTE, VoLTE, and RCS, with secure high-bandwidth connections guaranteeing a high level of transmission quality.





Benefits

IPX

- Reduces costs through decreased complexity. The network integrates all IP services into a single, efficient, and secured connection.
- Enhances quality of service by seamlessly providing customers end-to-end, secure, high-quality IP-based voice, data, and video services, including VoLTE, ViLTE, and RCS over 4G LTE networks.
- Improves network management through a robust set of Web-based tools with comprehensive traffic reporting and troubleshooting capabilities.
- Drives operational efficiency by reducing equipment costs and infrastructure support.

Diameter Signaling Service

- Supports high-data roaming volume with a single, scalable Diameter peer implementation for all Diameter interconnections.
- Ensures high availability, with an automatic fail-over mechanism, and low latency resulting from the strategic and geographic placement of Syniverse's Diameter routing platforms.
- Improves management of traffic to and from an LTE core network during peak periods, so your network does not experience overload situations.
- Normalizes and modifies Diameter messages between roaming partners to ensure they conform to the home network's Diameter signaling format.
- Reduces costs through a managed-service offering, which relieves pressures on existing infrastructure and requires little to no capital expenditures and minimal operating expenses.
- Optimizes your network through a reliable, future-proof architecture.
- Increases customer satisfaction by delivering premium experiences through value-added services.
- Enables you to better manage mobile data and signaling traffic growth across 3G, LTE and IMS networks, allowing you to channel new traffic into profitable services.
- Serves as your single transfer point for simplified and efficient data network routing.



Features

Feature	Description
IPX	
Service Quality Management	Offers guaranteed transport with service-level-agreement assurance, allowing for minimal delay, jitter, and packet loss for both control and user planes, in addition to fully supporting GSMA-defined key performance indicators.
Session Management	Allows for bandwidth-based call admissions and control to assure customers and promote services uptake.
Security Management	Delivers secure, reliable transport of critical roaming, messaging, and signaling traffic, including filtering and routing enforcement capabilities that offer protection from malicious attacks.
Global Route Management	Enables global reach with worldwide connectivity from roaming and interworking services, including Electronic Number Mapping (ENUM), with priority and efficient routing.
Guarantees High Quality-of-Service Compliance	Ensures proper priority handling of high-value application traffic through end-to-end class of service and quality of service.
Intelligent Roaming	Helps mobile operators make transparent business decisions that optimize revenue and offer subscribers high-quality mobile experiences
Packet Voice Interworking	<ul style="list-style-type: none"> ▪ Offers a high-quality, low-cost alternative to delivering voice traffic between wireline and wireless operators, as well as an alternative for voice call completion over IP, allowing you to minimize call-termination fees. ▪ Guaranteed quality of service and end-to-end quality-of-service commitment backed by a service-level agreement. ▪ Directory service, including global mobile number portability and ENUM support. ▪ Data clearing service and support for multiple services. ▪ Media gateways for voice and video payload data session. ▪ Management. ▪ Roaming intelligence from GPRS tunneling protocol (GTP) session analysis. ▪ Integration of network level and application service-level monitoring and support monitoring.



Diameter Signaling Service	
Route Resolution	Allows centralized route resolution to multiple roaming partners and Diameter interoperability between different vendor and operator Diameter implementations.
Security	Provides security and topology hiding of your LTE core network using Diameter proxies at our IPX points of presence (PoPs), which limits security attach exposure and sharing of network topology layer with roaming partners.
Diameter Mediation	Supports Diameter mediation by allowing you to add, delete and modify Attribute Value Pairs based on certain criteria, such as origin and destination realm.
IMSI Resolution	Supports IMSI resolution by performing address resolution and insertion of the Destination-Host associated with the IMSI.
Local and Home Breakout	Provides the roaming solutions that support both local and home breakouts.
Intelligence	<ul style="list-style-type: none"> Integrates with valuable Syniverse real-time intelligence tools to ensure you're providing your customers with the highest quality of experience while roaming, by monitoring, troubleshooting, and proactively resolving problems. Provides reporting and troubleshooting tools so you don't need to purchase in-house solutions or external probes.
Roaming Policy Control	Allows Diameter messages to be exchanged only with authorized roaming partners by utilizing versatile Diameter traffic block capabilities.
SCTP Multi-homing	Supports SCTP multi-homing. When the failure of the primary path to a neighboring Diameter peer is detected, all Diameter messages can be automatically switched to the secondary path.
Failure Detection and Failover	Actively monitors peer status and fail-over to the standby peer once the failure is detected on a per Diameter message basis.

Get Started Today!

Syniverse is a global mobile solutions specialist that connects more than 1,500 mobile service providers and consumer companies in nearly 200 countries. We specialize in enabling the world's mobile users to connect with each other regardless of device, network or location. Our advanced cloud-based solutions deliver superior user experiences through always-on services and real-time engagement. For more than 25 years, we have been simplifying complexity to deliver the promise of mobility – a simple, interoperable experience, anytime, anywhere.

[Contact us today](#) for more information or visit www.syniverse.com to learn more.

© 2015 Syniverse Technologies, LLC. All rights reserved under U.S. and international copyright laws. Rev. 07-15

